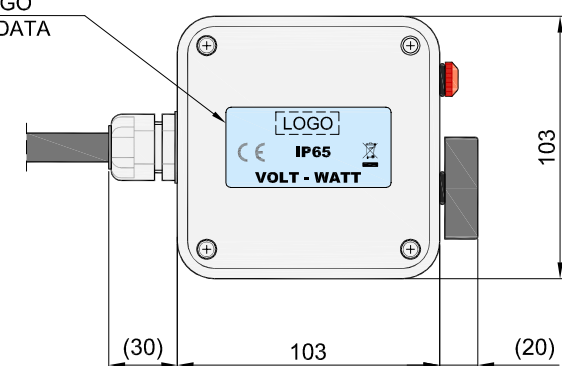
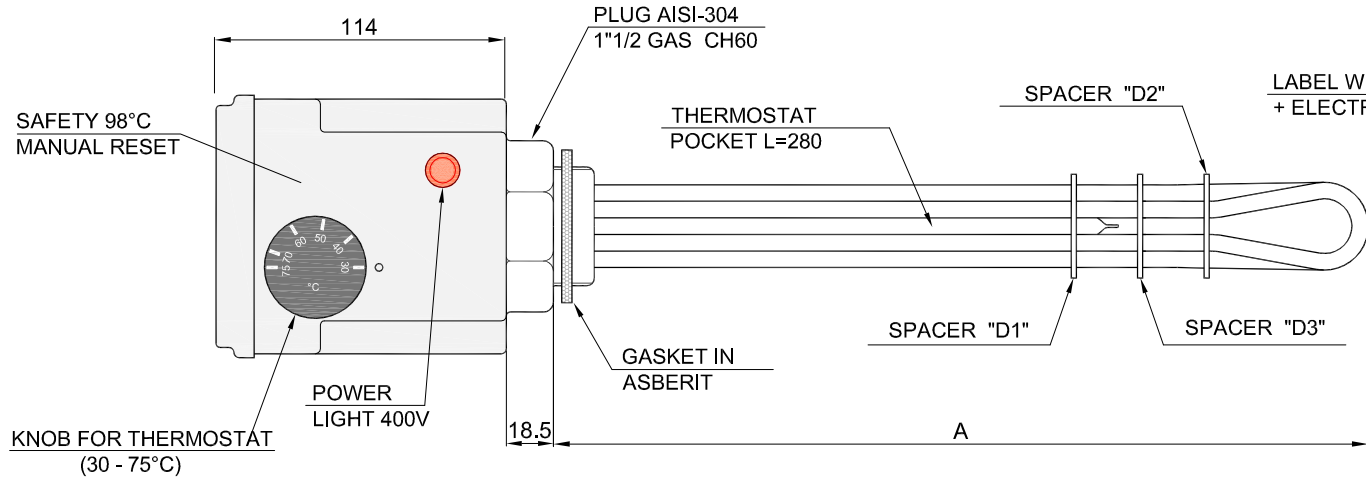
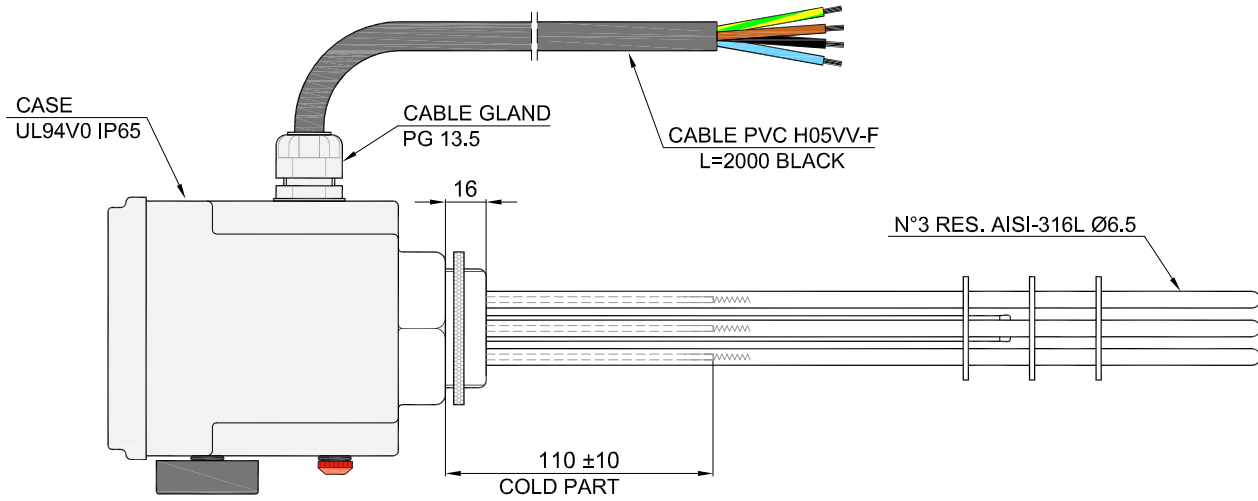
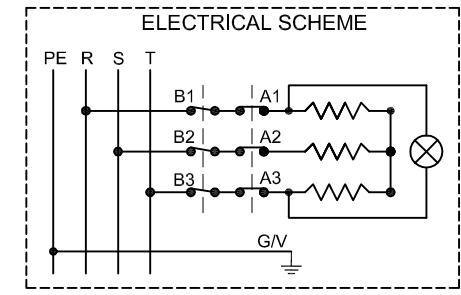


STANDARD OF REFERENCE : EN 60335-1 ; EN 50106

MAX. WORKING TEMPERATURE : 100°C
USE IN DOMESTIC WATER



LABEL:
EXTERNAL: LOGO - VOLT - WATT - CE - IP65 - WEEE
INTERNAL : ELECTRICAL SCHEME



09	823001800S	400	12000	13.3	850	4G2.5	D1 + D2 + D3
08	823000300S	400	9000	12.5	700	4G1.5	D1 + D2
07	823000800S	400	7500	10.4	700	4G1.5	D1 + D2
06	823000200S	400	6000	10.1	600	4G1.5	D1 + D2
05	823000600S	400	5500	10.3	550	4G1.5	D1 + D2
04	823001200S	400	5000	10.6	500	4G1.5	D1
03	823000500S	400	4500	10.9	450	4G1.5	D1
02	823000400S	400	4000	11.4	400	4G1.5	D1
01	823000100S	400	3000	13.1	300	4G1.5	D1
Pos.	SEDES CODE	VOLT	WATT TOT. +5% -10%	W/cm ²	A	TYPE OF CABLE	SPACER

Mod.	Description	Date	Signature
SEDES GROUP HEATING ELEMENTS	Denomination THREE-PHASE HEATER ON 1 1/2 GAS PLUG Applicability WATER BOILER		Sedes part number /
Date 27/07/10	Draw MF	Material AISI-316L Ø6.5	Color /
Date	Appr.	Customer SEDES GROUP	Customer part number /

THIS DRAWING IS PROPERTY OF SEDES - REPRODUCTION IN WHOLE OR IN PART AND DIVULGATION TO OTHER PEOPLE ARE PROHIBITED WITHOUT THE WRITTEN CONSENT OF THE COPYRIGHT OWNER

QUESTO DISEGNO È PROPRIETÀ SEDES, PROTETTO DALLE VIGENTI LEGGI, SENZA PREVENTIVO CONSENSO SCRITTO È TASSATIVAMENTE VIETATA LA RIPRODUZIONE IN TUTTO O IN PARTE, LA CESSIONE O L'UTILIZZO DA PARTE DI TERZI.